



Searching the web , Searching the future

LIU Zuoda

Tsinghua University

liuzd02@mails.tsinghua.edu.cn



Outline

- Introduction
- SE-based model for network management
- SE-based model for social survey
- New concept of SE
- Reference

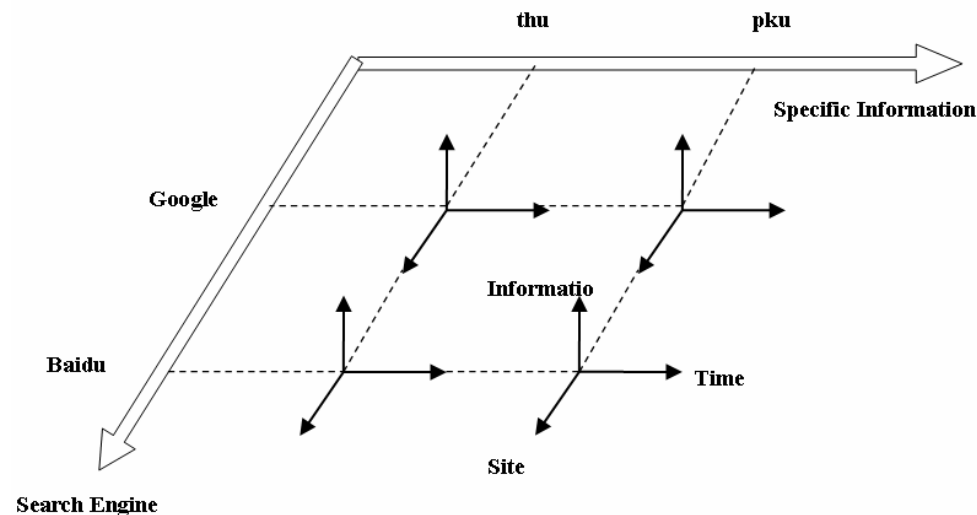


Introduction

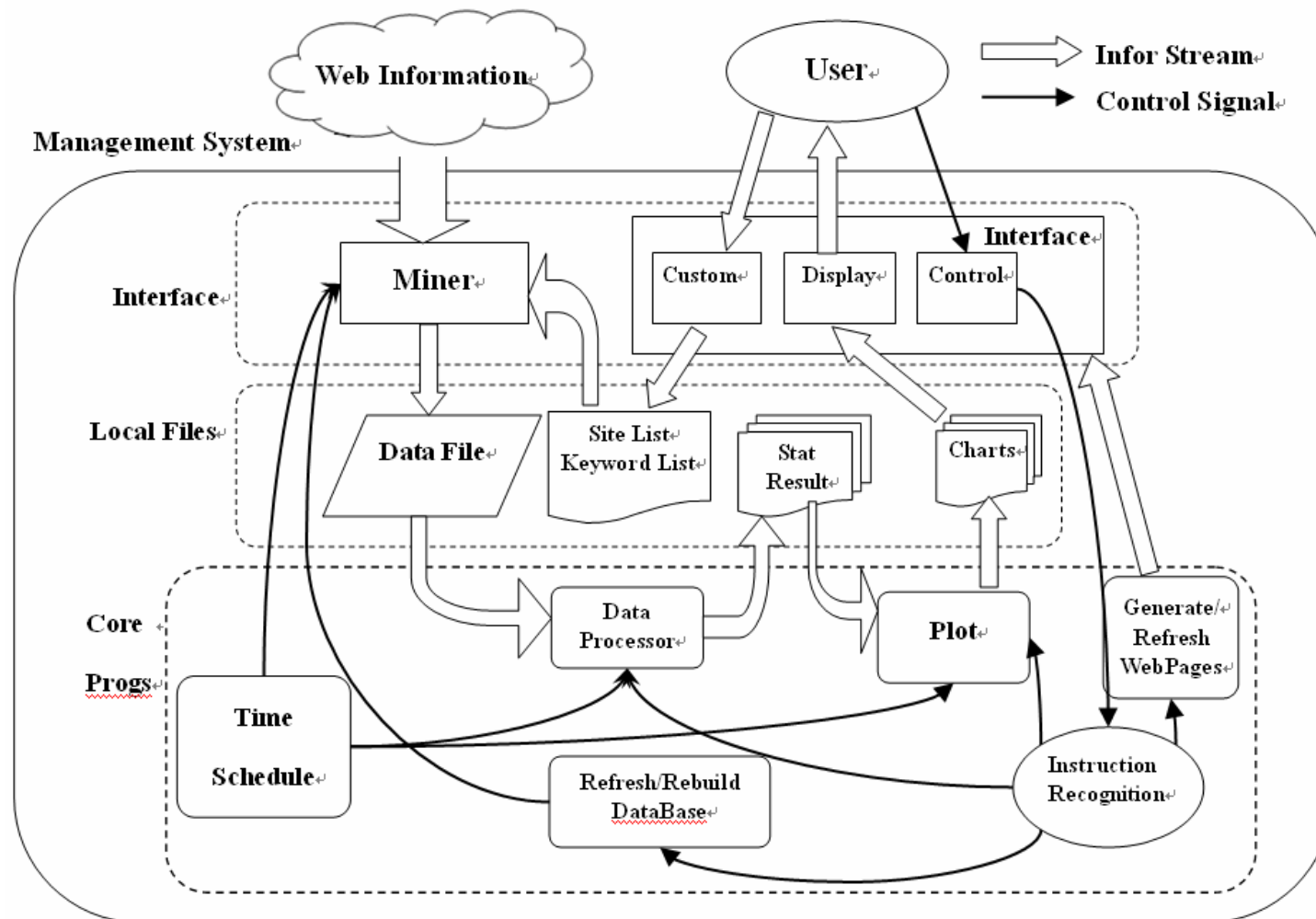
- “The plentiful content of the World-Wide Web is useful to millions”^[1]
- Explosion of information
- Search Engines
 - Google
 - Yahoo
 - Baidu
 -

SE-based model for network management

- Special needs from leaders or managers
 - Concerns on specific information
- Inspect specific information
 - 3-Dimension



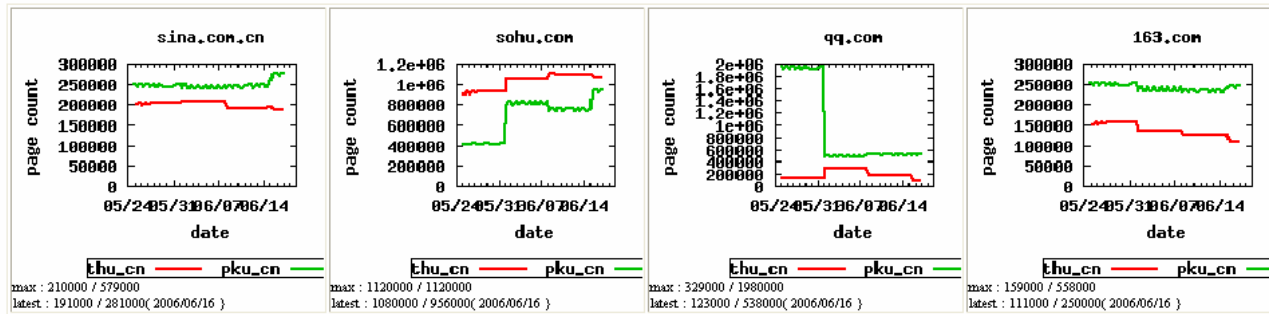
Structure of SE-based network management system



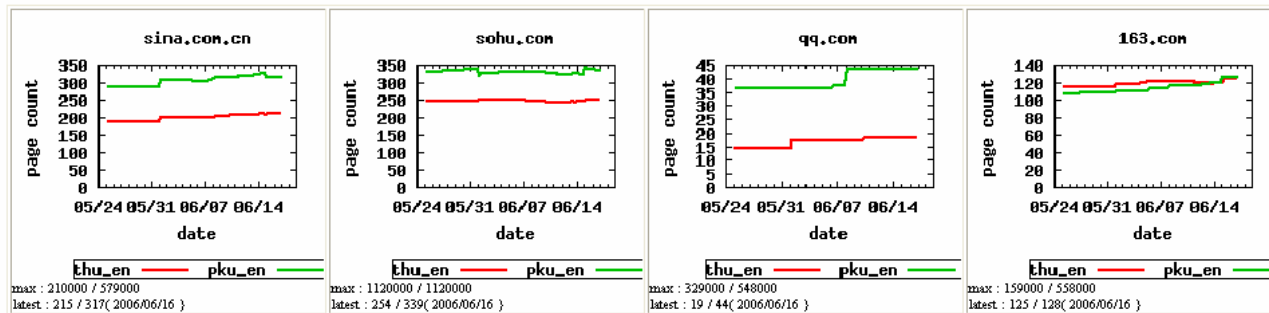
Interface of SE-based network management system

Net Information Management System

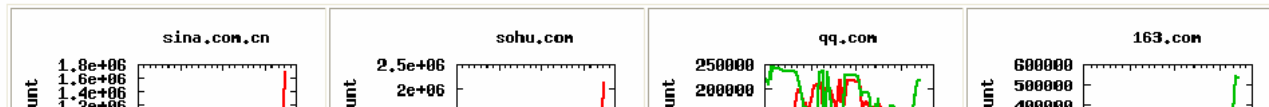
baidu_cn



baidu_en



google_cn

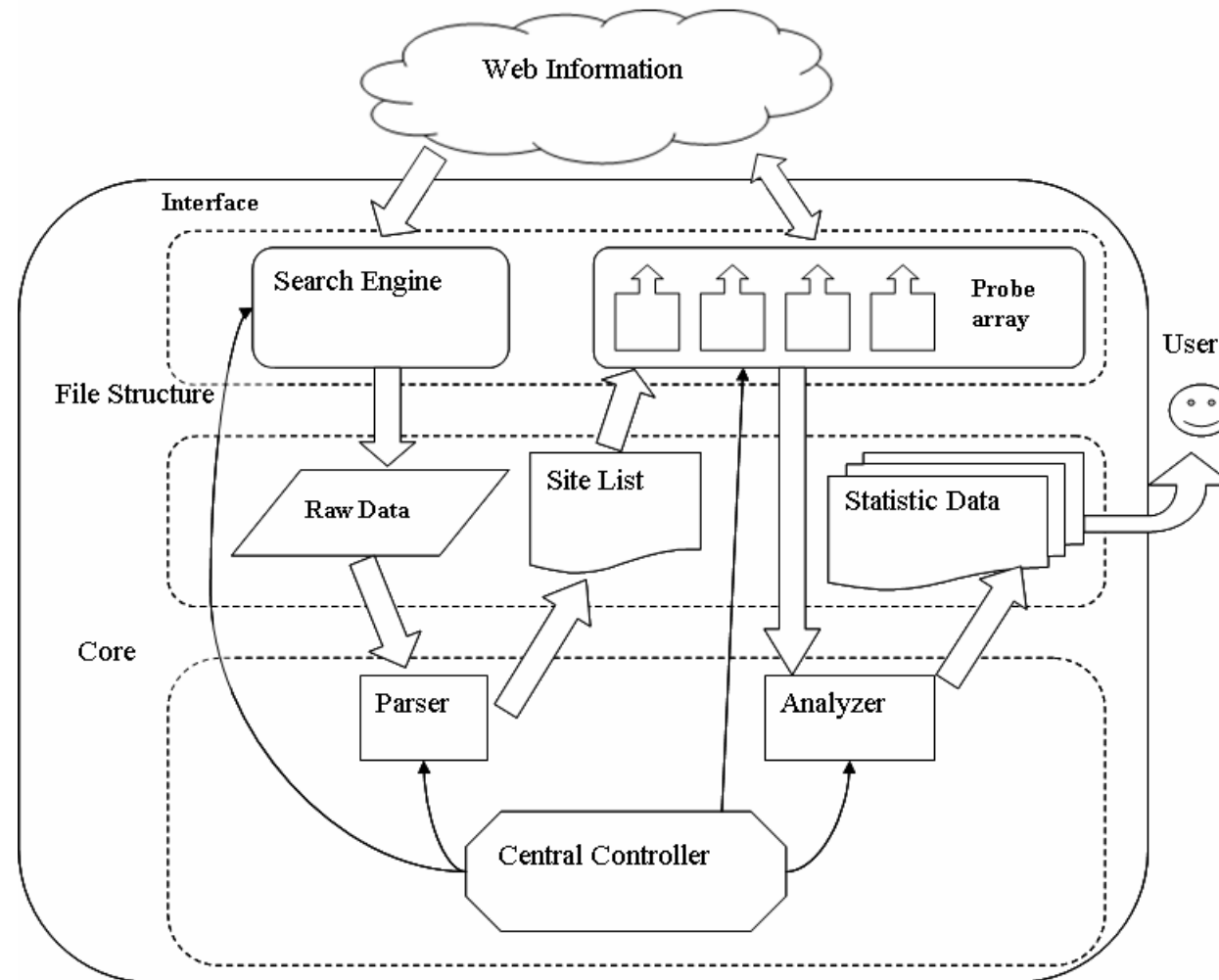




SE-based model for social survey

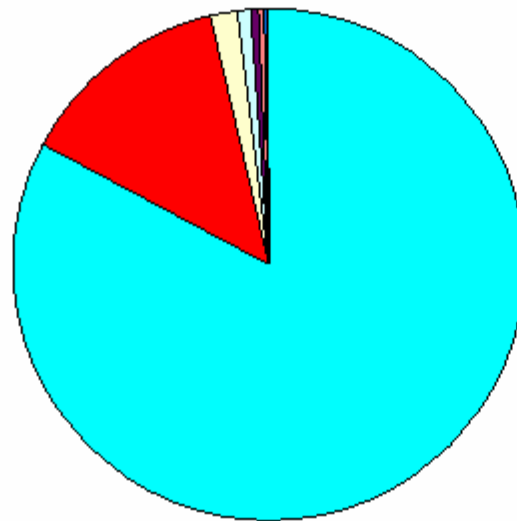
- Traditional survey
 - Filling questionnaires
 - Ineffective
 - Imprecise
- SE-based survey
 - Effective
 - Precise
 - Large amount

Structure of SE-based social survey system



Results (1)

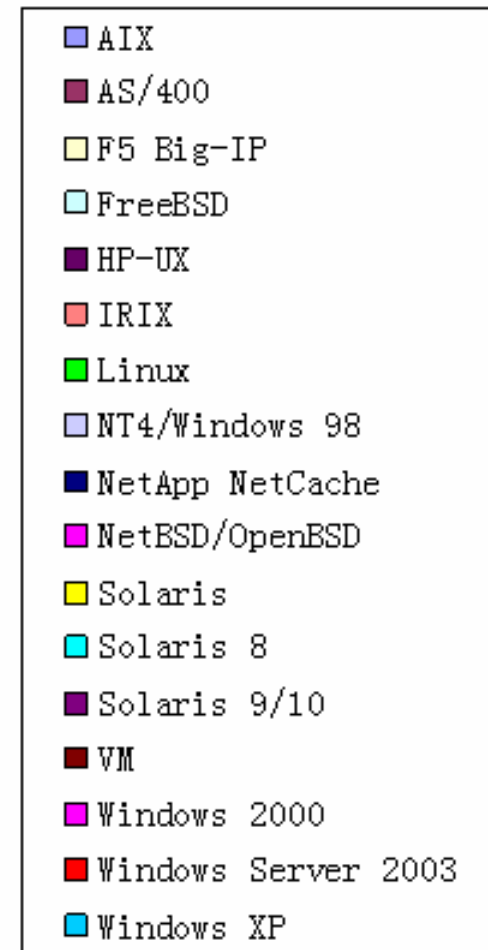
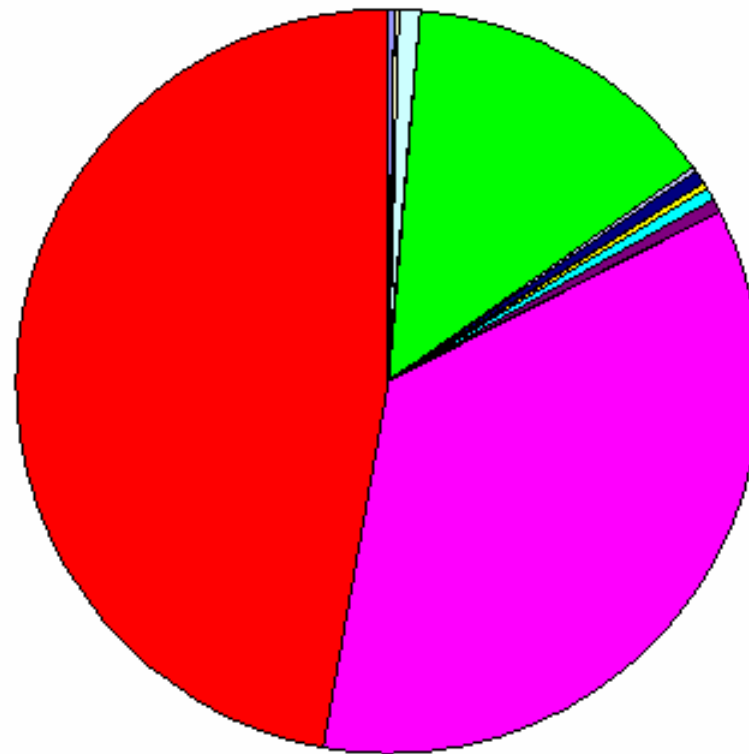
Operating System types in China
n=7563



- Windows
- Linux
- Solaris
- BSD
- NetApp NetCache
- AIX
- HP-UX
- F5 Big-IP
- IRIX
- AS/400
- VM

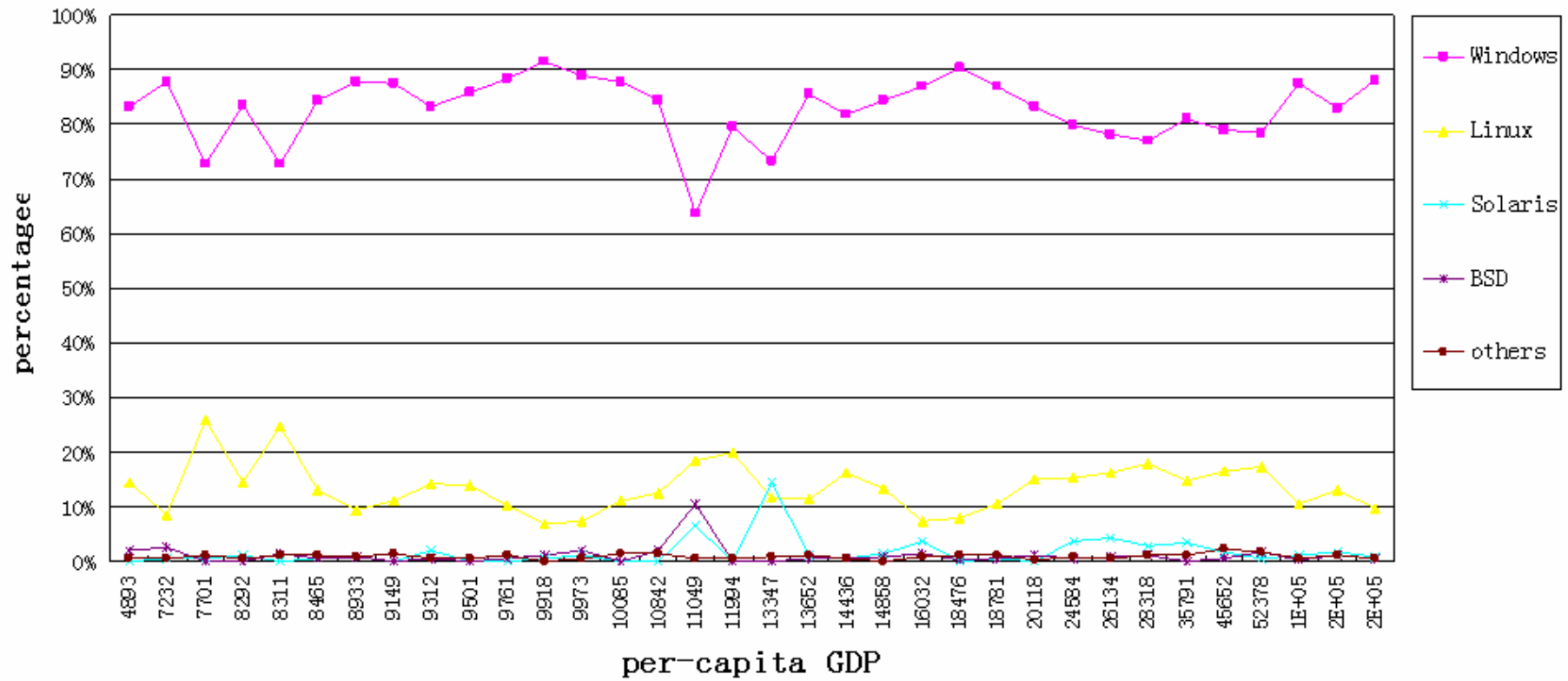
Results (2)

Operating System of China's Government Sites
n=7563

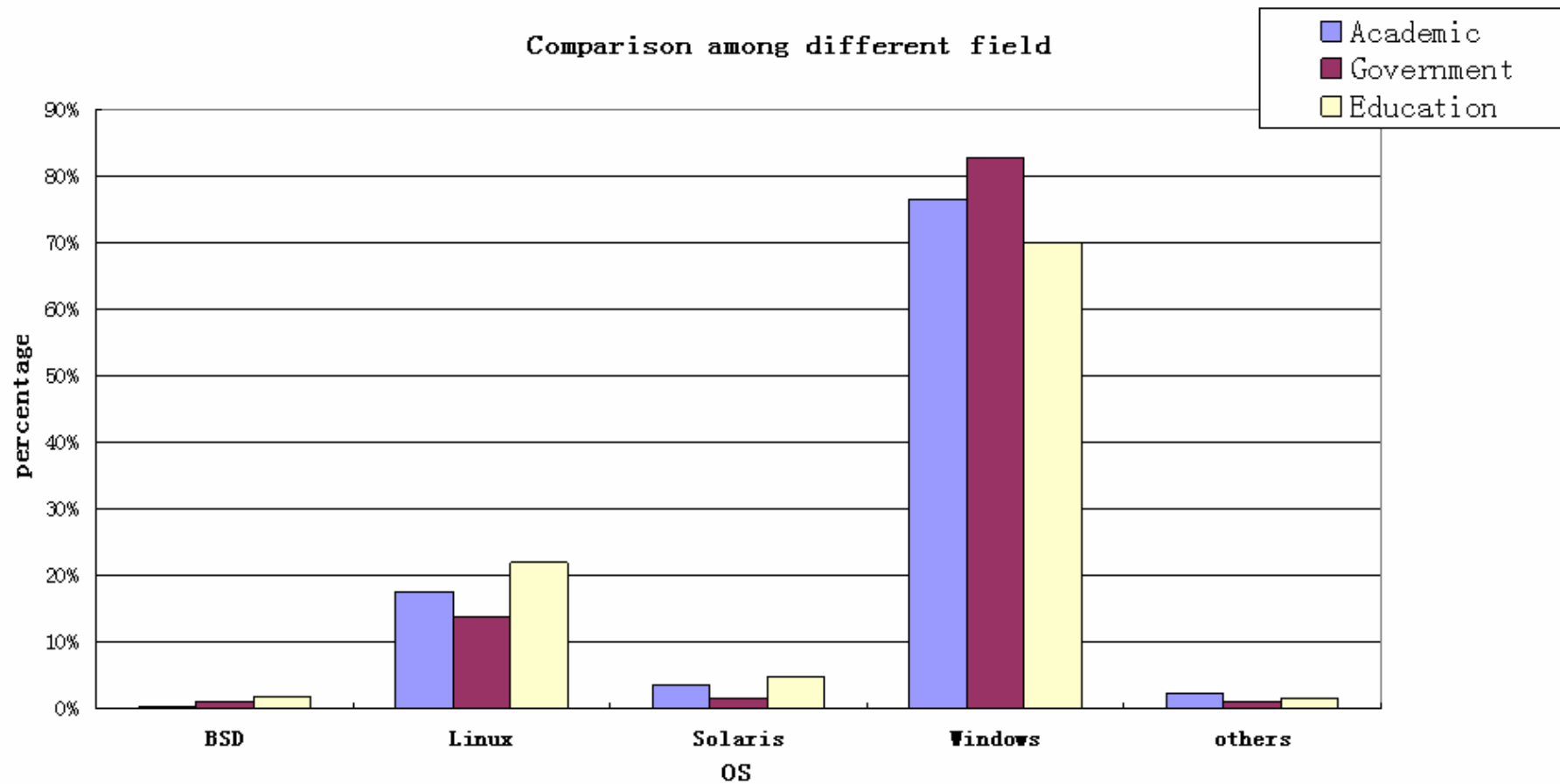


Results (3)

Operating System vs. per-capita GDP
n=7563



Results (4)





New concept of SE

- Intelligent

- Comprehension & Learning
- AI technology
- ANN technology

- Distributed

- Large Scale
- Distributed Computing technology
- Multi-CPU cooperating



Reference

- [1] ARVIND ARASU, JUNGHOO CHO, HECTOR GARCIA-MOLINA, ANDREAS, PAEPCKE, SRIRAM RAGHAVAN. Searching the Web, ACM Transactions on Internet Technology, August 2001, Vol..1, No.1: Pages 1–43.
- [2] LIU Zuoda, XU Jingfang, CHEN Maoke , LI Xing, “SE-based network specific information 3D inspection system”, Journal on Communications , Vol.27, No.11A, November 2006.
- [3] Sergey Brin and Lawrence Page. The Anatomy of a Large-Scale Hypertextual Web Search Engine.
- [4] Shaozhi Ye. Topic-specific Web Resource Discovery based on Community Hyperlink Model. (NGN-lab provided)



Thank you!

- Contact me

- Email: liuzd02@mails.tsinghua.edu.cn

- Addr: FIT 4-204, Tsinghua University, 100084